



bailey pond point: existing site facing north

This design proposes a bosque style grove of birch trees as a new location for the David Coldren Memorial Bench. The Memorial Bosque will be a place for solitude, peace, and reflection on ‘the point’ on the southern edge of Bailey Pond -- a more accessible alternative to the bench’s current location. Bosques are formal gardens of trees planted as groves on a grid. The natural space will be visually interesting year-round, providing a place for solitary contemplation or restful gathering for 2-4 people. This proposal is a cost-effective, restful node along Tryon’s existing tallgrass prairie trails.

## tfi memorial bosque

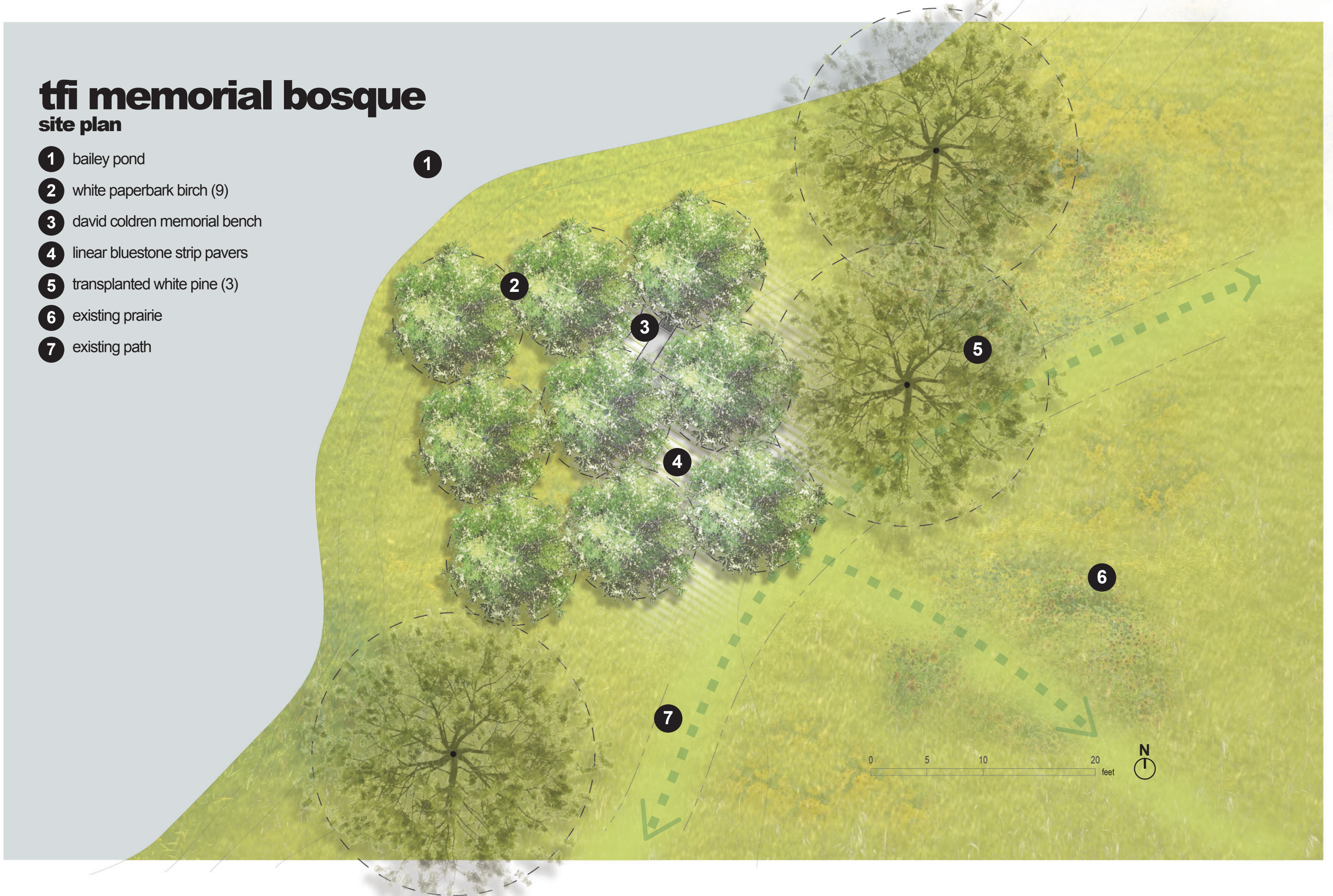




# tfi memorial bosque

## site plan

- 1 bailey pond
- 2 white paperbark birch (9)
- 3 david coldren memorial bench
- 4 linear bluestone strip pavers
- 5 transplanted white pine (3)
- 6 existing prairie
- 7 existing path

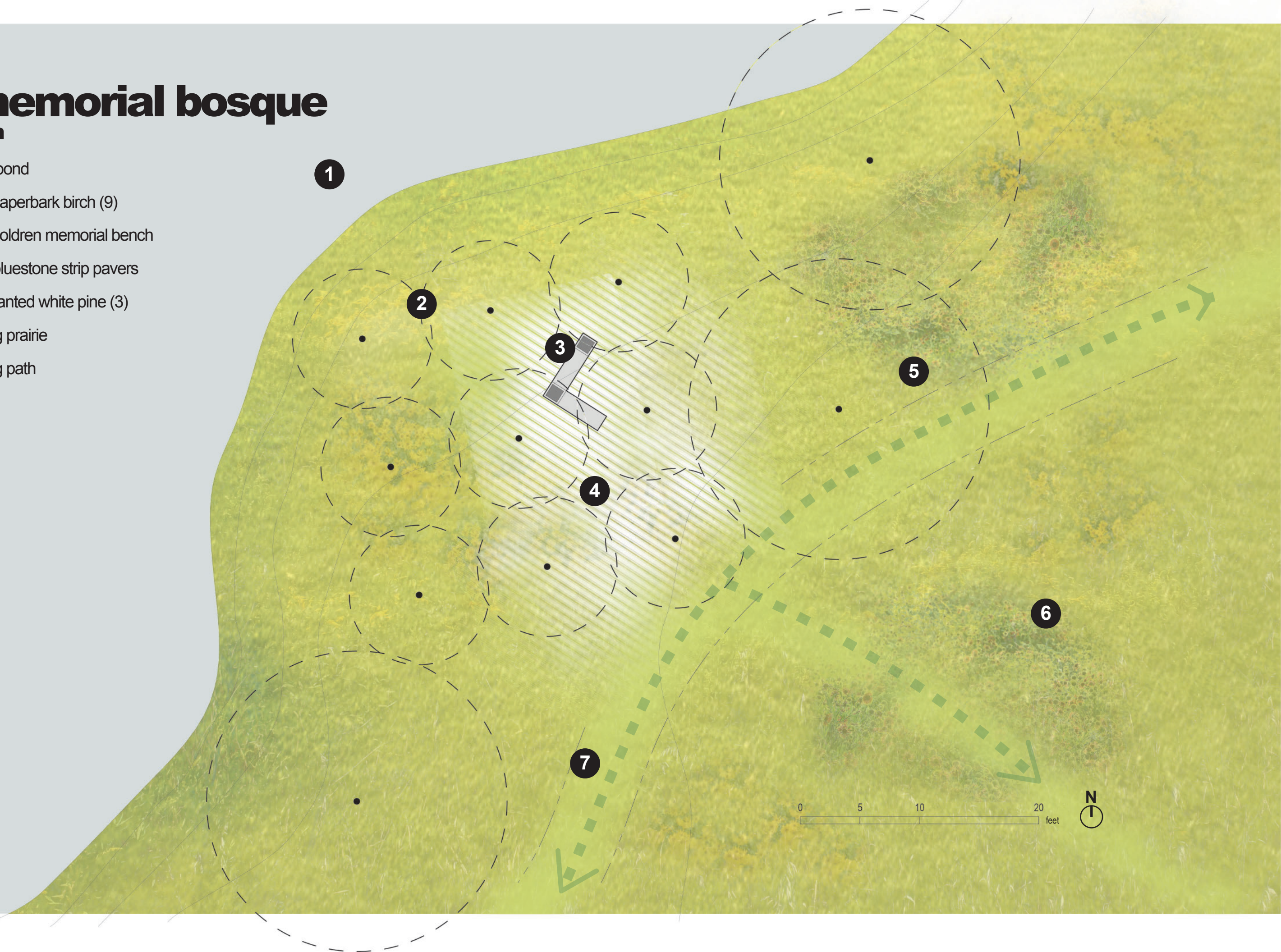




# tfi memorial bosque

site plan

- 1 bailey pond
- 2 white paperbark birch (9)
- 3 david coldren memorial bench
- 4 linear bluestone strip pavers
- 5 transplanted white pine (3)
- 6 existing prairie
- 7 existing path

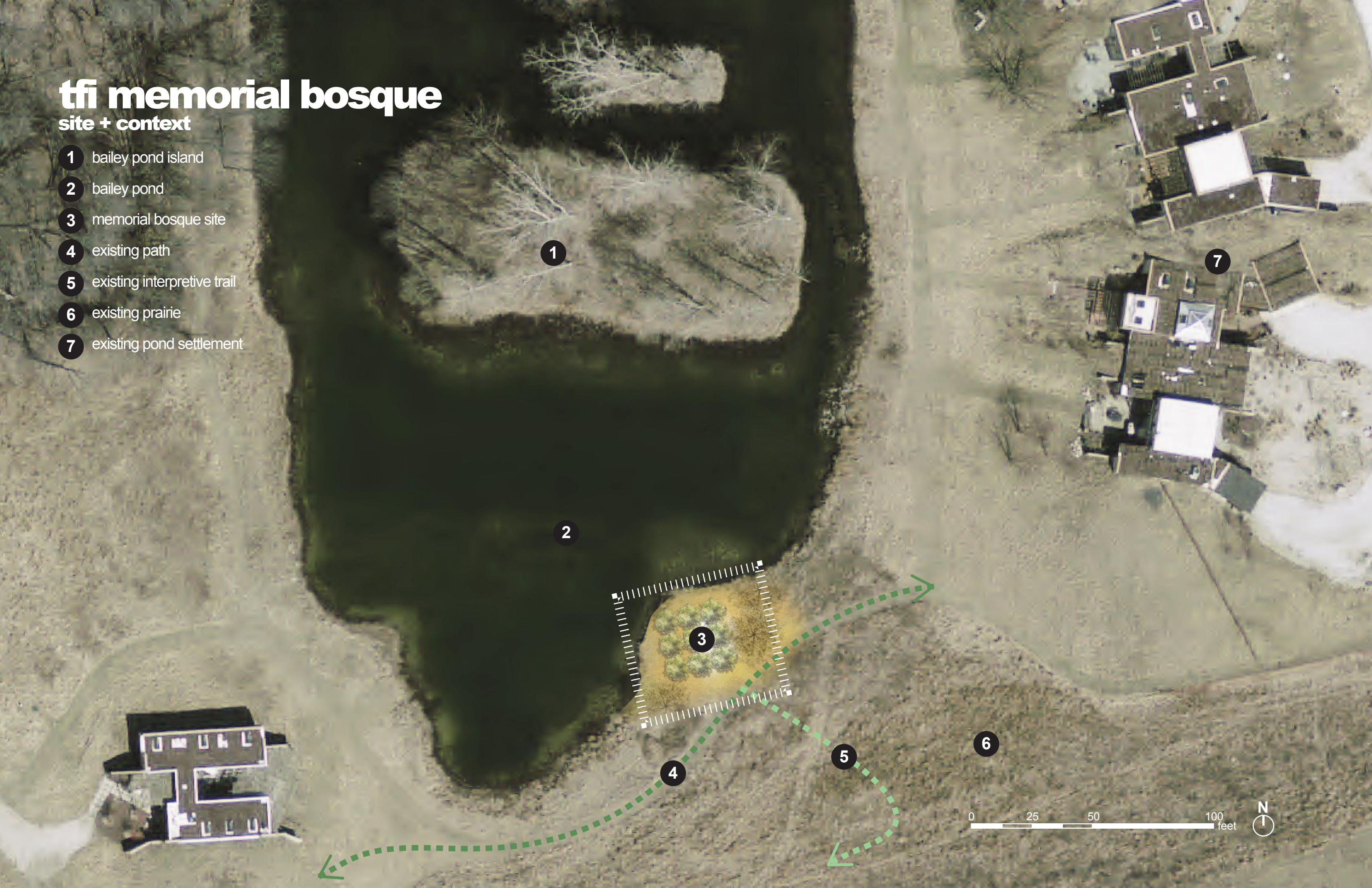




# tfi memorial bosque

site + context

- 1 bailey pond island
- 2 bailey pond
- 3 memorial bosque site
- 4 existing path
- 5 existing interpretive trail
- 6 existing prairie
- 7 existing pond settlement

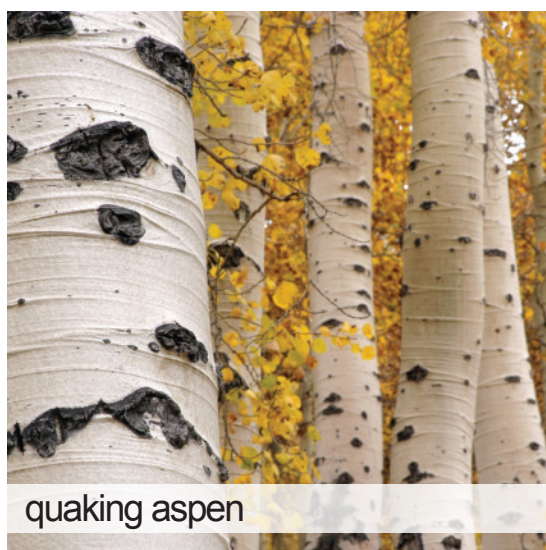
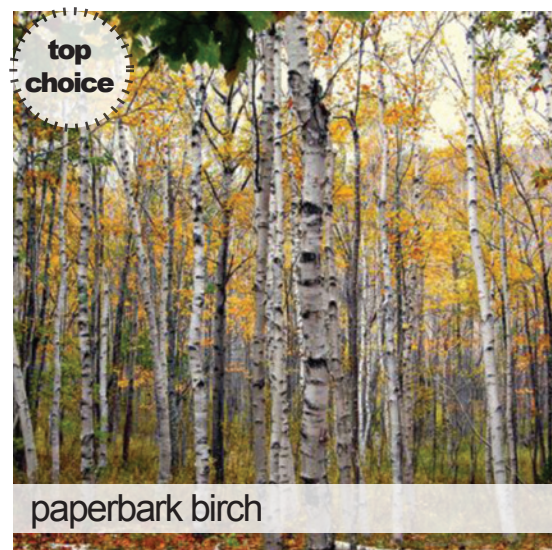




# tfi memorial bosque

materials: softscape

## BOSQUE TREES



The bosque trees must be a singlestem, reliable, and straight-growing species which performs well in sandy soil, with a compact spread and height. Native Paperbark Birch is the top choice. Its ornate white bark pairs well with the concrete bench and provides beautiful winter interest. Dakota Pinnacle has a very well-suited habit for this application, but it is non-native and difficult to source. Quaking Aspen offers outstanding fall color and a good size, but may colonize and sucker in these growing conditions.

## SEEDED UNDERSTORY



## EDGE TREES



The edge tree must act as a screen and rough border to provide a sense of enclosure and to blur the stark geometry of the bosque from outside sight lines. White Pine is widely available and reliable, but it may require lower branch pruning to avoid crowding entries. Jack Pine and Eastern Red Cedar are smaller alternatives, and are well-suited to the contextual ecology.



Low lying plants with interesting textures will break up the ground plane and prevent invasion by other, unfavorable species. Wild lupine is a somewhat-rare, ornate flowering plant native to northern Indiana's dune savvanahs. Sensitive fern is a reliable native plant found throughout Tryon's meadows.



# tfi memorial bosque

materials: hardscape

## PAVERS



linear bluestone



limestone steppers



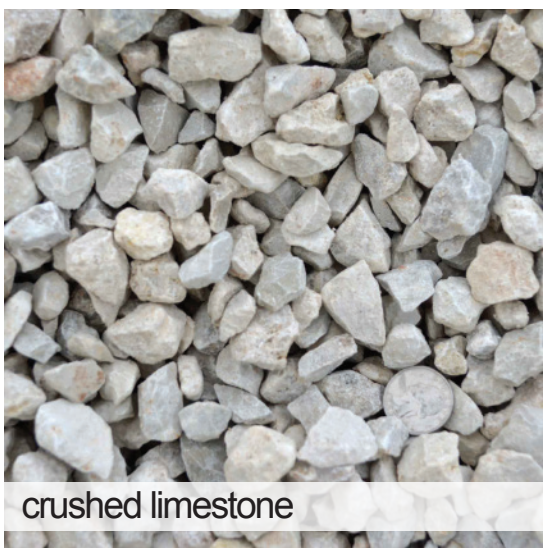
river stone cobbles

The groundplane should provide subtle dynamic movement towards the entrance and around the bench. Linear bluestone is preferred for its orthogonal geometry and its availability (\$25 per pallet at Laporte County Nursery). Limestone steppers offer a color which best matches the bench. River stone cobbles may provide an interesting, soft contrast to the color and geometry of the bench.

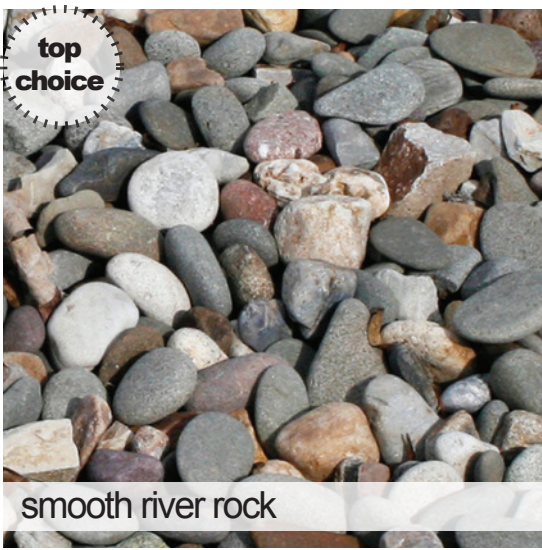
## BENCH + BASE



memorial bench



crushed limestone



smooth river rock

The David Coldren Memorial Bench is an approximately 6' x 6' "L" shaped concrete bench. The color is whitish-grey. Crushed limestone or smooth river rock are widely available bases which would match the color of the bench well. Tryon has a small stock of smooth river rock available.